

eGalaxTouchManager

Active Pen Auto Tuning Quick Guide

For EXC80H84 Series



EETI CONFIDENTIAL

For Release Only Under Non-Disclosure Agreement (NDA)
For EETI Internal Use Only

Trademark Acknowledgments:

EETI and EETI logo  and eGalaxTouch® logo  *eGalaxTouch*

and eGalaxTouchManager® logo  *eGalaxTouchManager* are trademarks of eGalax_eMPIA Technology Inc.

(C) Copyright by EETI 2000, 2018. All rights reserved.

Printed in Taiwan.

EETI CONFIDENTIAL
RELEASE UNDER NON-DISCLOSURE AGREEMENT (NDA)
FOR EETI INTERNAL USE ONLY



eGalax_eMPIA Technology Inc.

11F, No 302, Rueiguang Road, Nei Hu District,

Taipei 114, TAIWAN

T: +886 2 8751 5191

F: +886 2 2797 8808

URL: www.eeti.com

Sales : touch_sales@eeti.com

FAE : touch_fae@eeti.com

Revision History

Document ID	Date	Revision Description
EUG-032-180807-1	2018/08/07	Update EETI document form.

EETI CONFIDENTIAL
RELEASE UNDER NON-DISCLOSURE AGREEMENT (NDA)
FOR EETI INTERNAL USE ONLY

Index

1	Active Pen Auto Tuning Process	5
1.1	Discover Frequency Setting	6
1.2	Calibrate Pressure	7
1.3	Linear Calibration	8
1.4	Performance Validation	9
2	Troubleshooting	10
2.1	Pressure base value Adjustment	10
2.2	Others	11

EETI CONFIDENTIAL
RELEASE UNDER NON-DISCLOSURE AGREEMENT (NDA)
FOR EETI INTERNAL USE ONLY

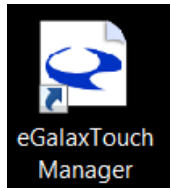
1 Active Pen Auto Tuning Process

!!! Important !!!

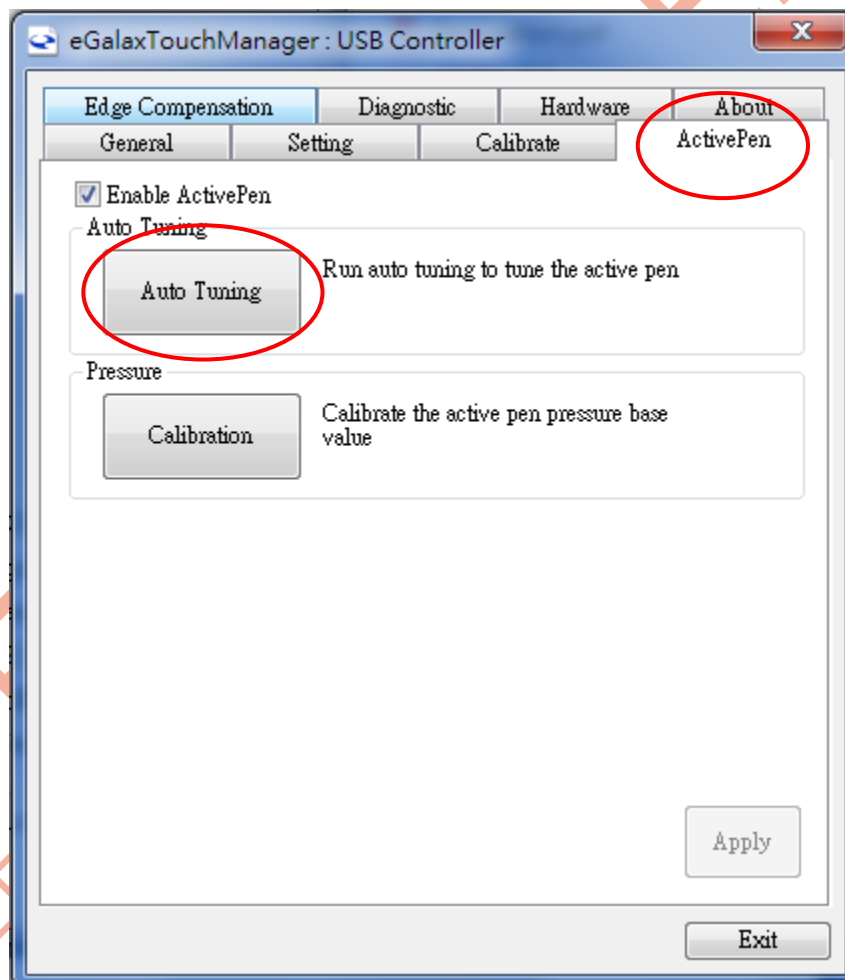
Please make sure the touch panel surface is **“Clean”**.

Any liquid or item on the surface is not allowed while tuning process.

Execute eGalaxTouchManager.

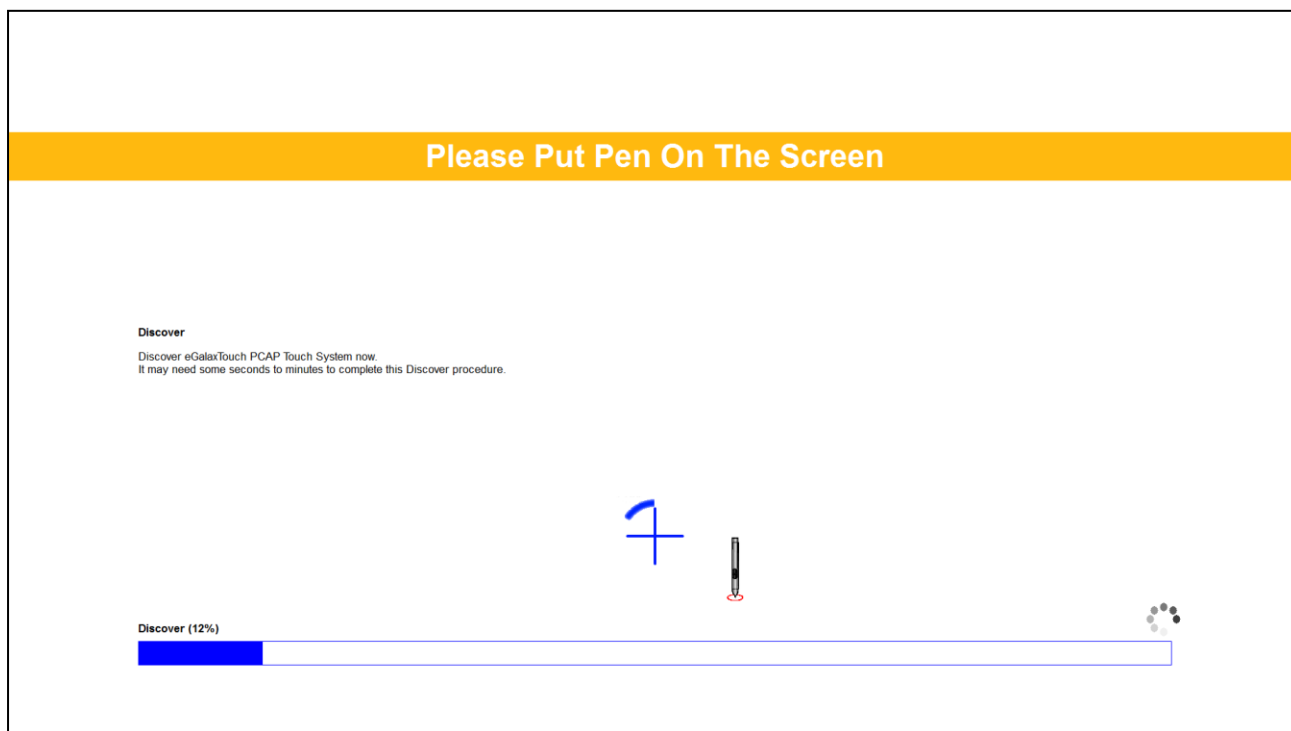


Select “ActivePen” Page >> Click “Auto Tuning” button.



1.1 Discover Frequency Setting

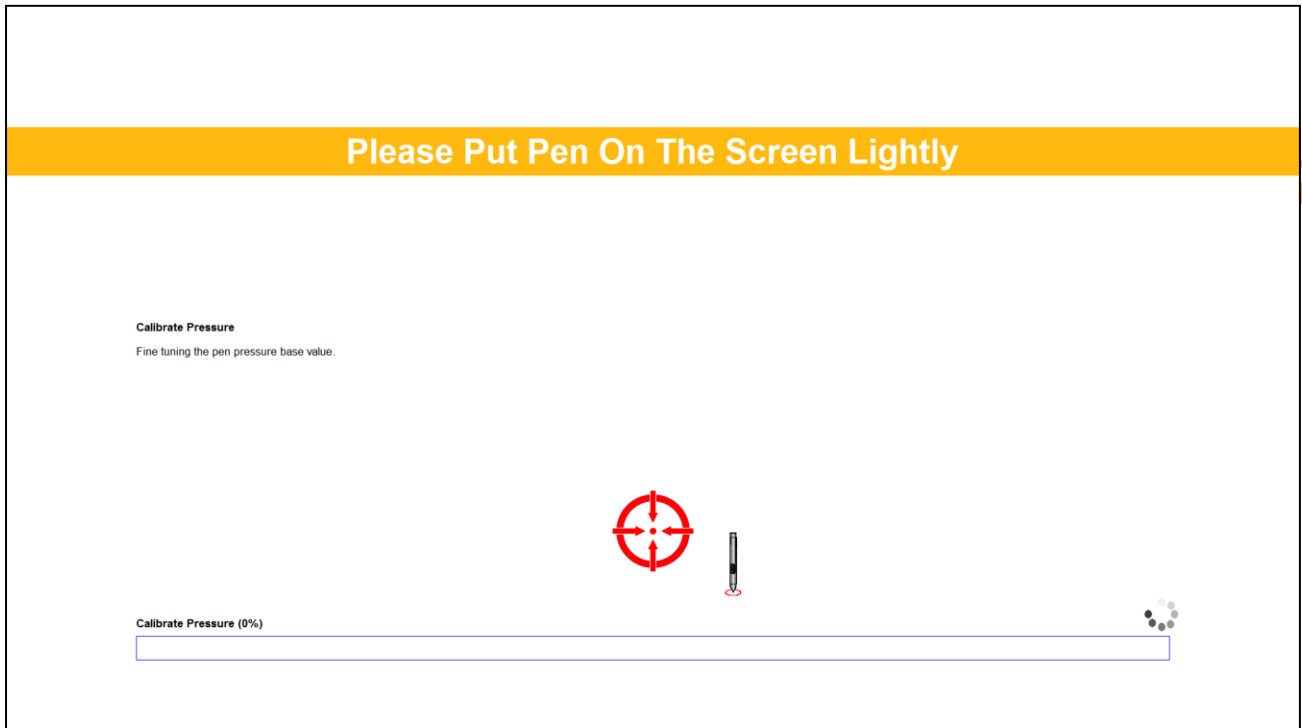
This procedure will discover frequency setting of active pen, please make sure put active pen on the screen till 100%.



EETI CONFIDENTIAL
RELEASE UNDER NON-DISCLOSURE
FOR EETI INTERNAL USE ONLY

1.2 Calibrate Pressure

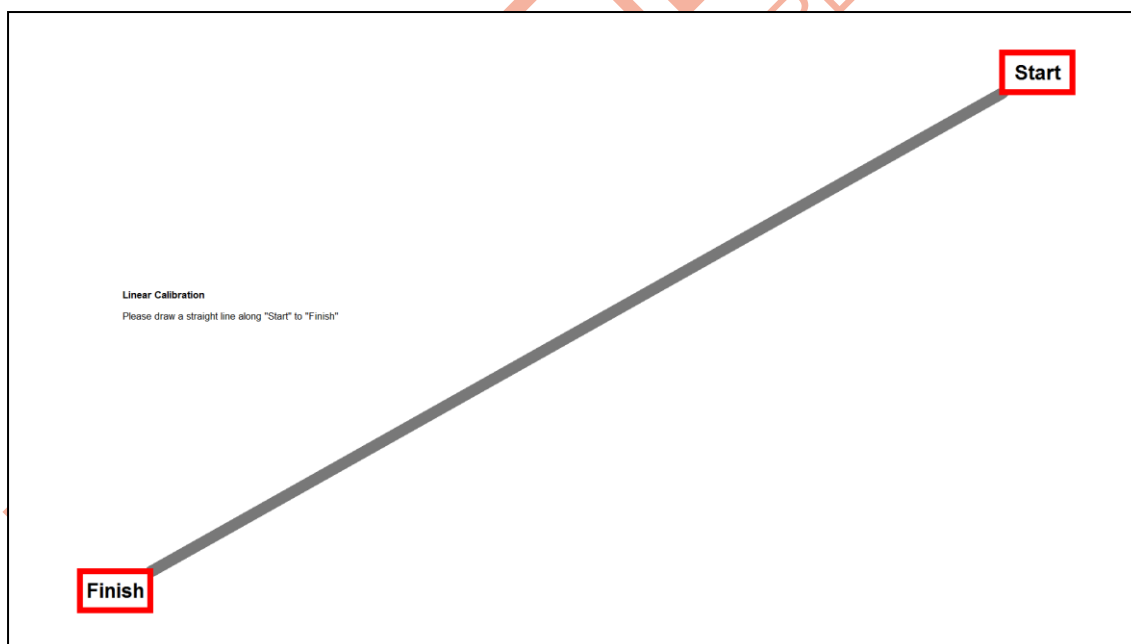
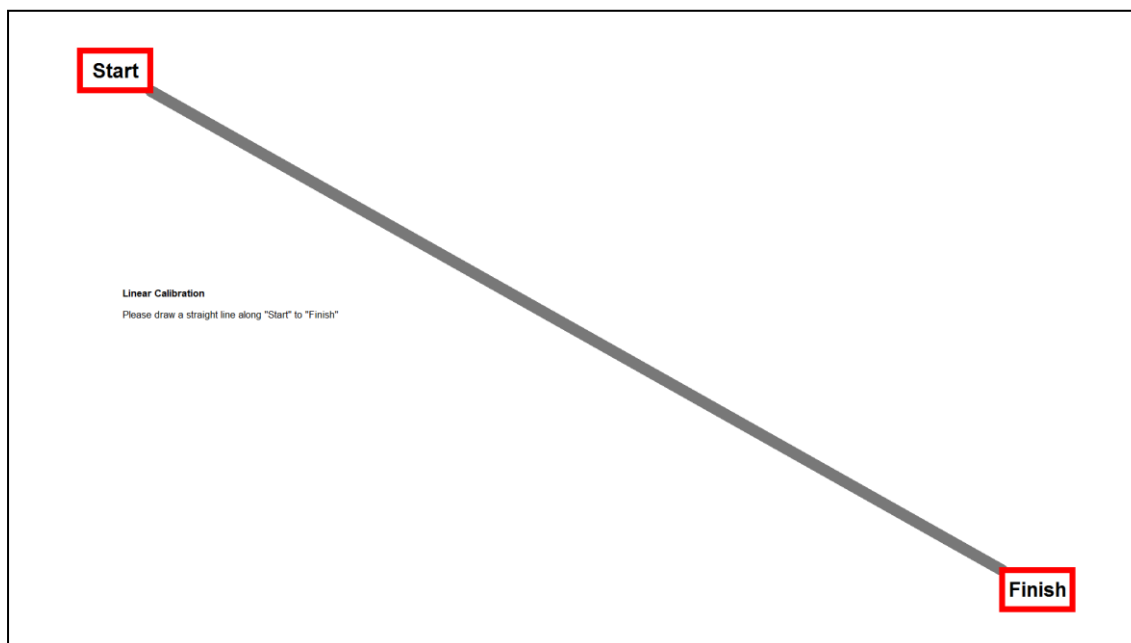
This procedure will calibrate pressure base value, please put active pen on screen **lightly** till 100%.



EETI CONFIDENTIAL
RELEASE UNDER NON-DISCLOSURE
FOR EETI INTERNAL USE ONLY

1.3 Linear Calibration

Please draw a straight line from "start" to "finish".

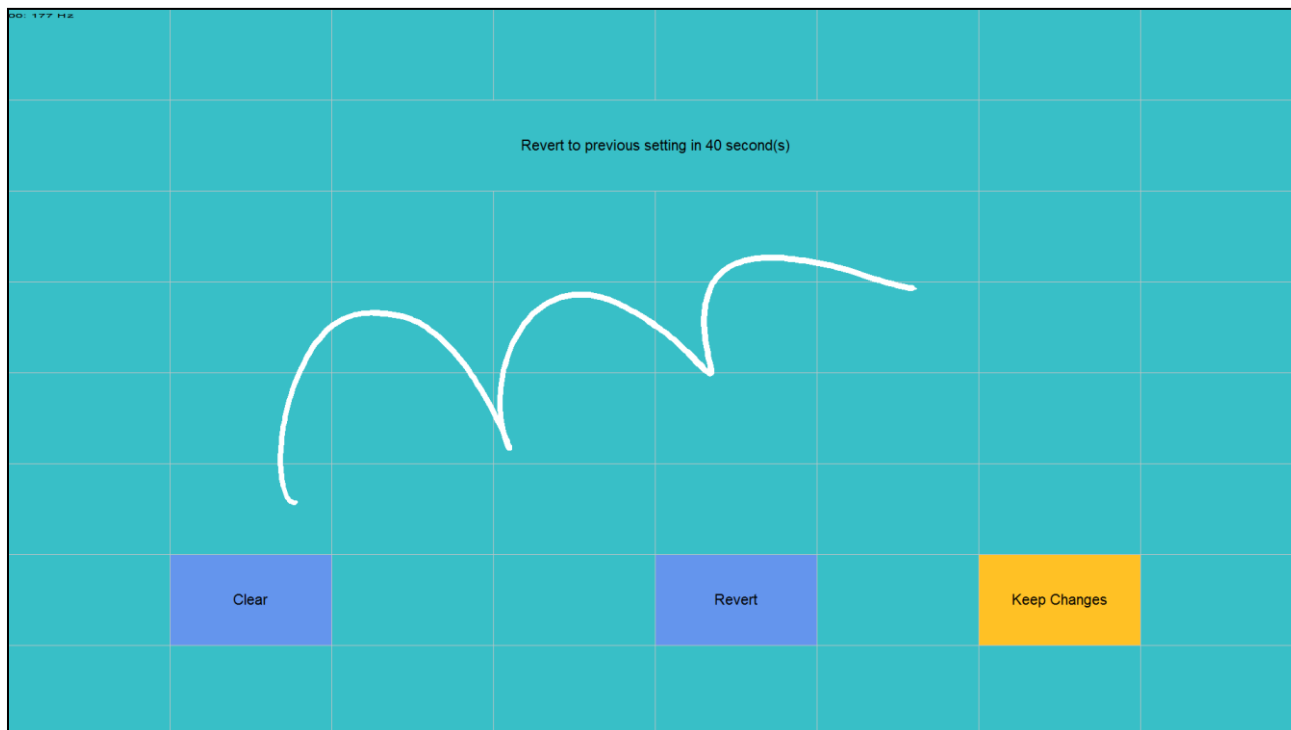


1.4 Performance Validation

“Keep Changes”: Keep the tuning result

“Revert”: Ignore tuning result, recover all the parameters.

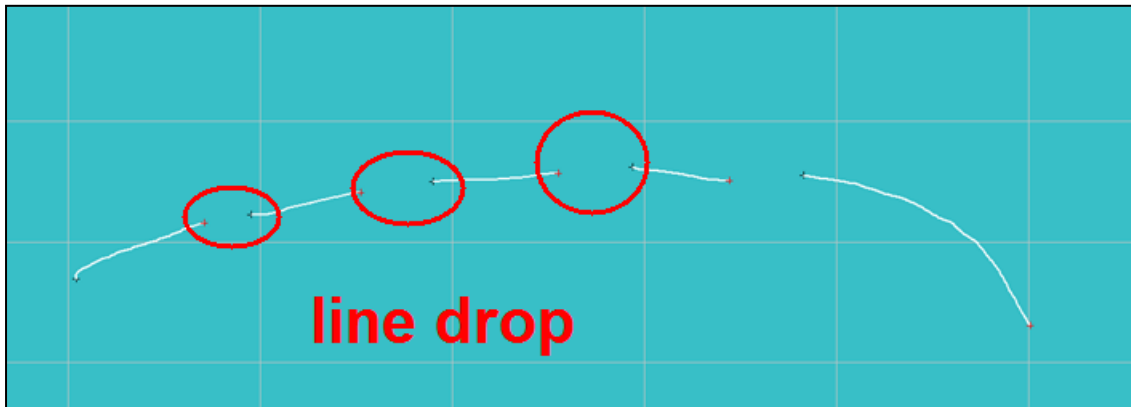
(Warning) If “Keep Changes” button is not clicked in 45 sec, TouchManager will automatically “Revert”.



2 Troubleshooting

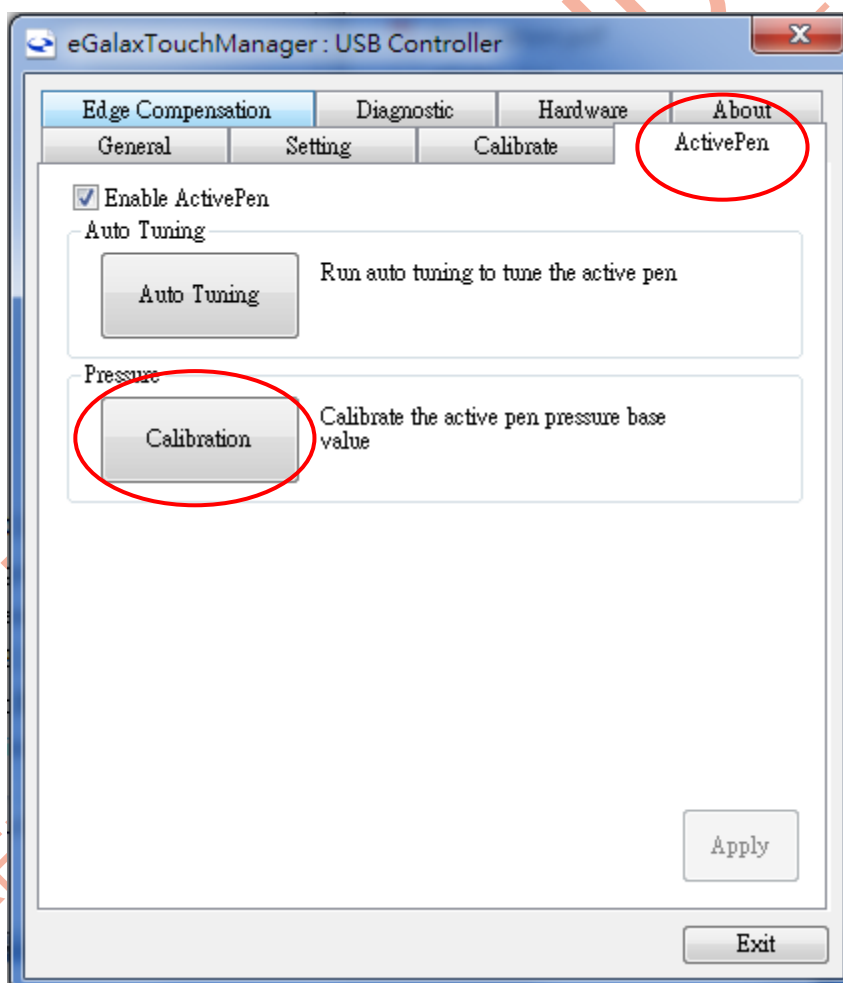
2.1 Pressure base value Adjustment

When you draw with active pen lightly, and sometimes line drop.



To adjust pressure base value, follow below steps:

Select "ActivePen" Page >> Click "Calibration" button.



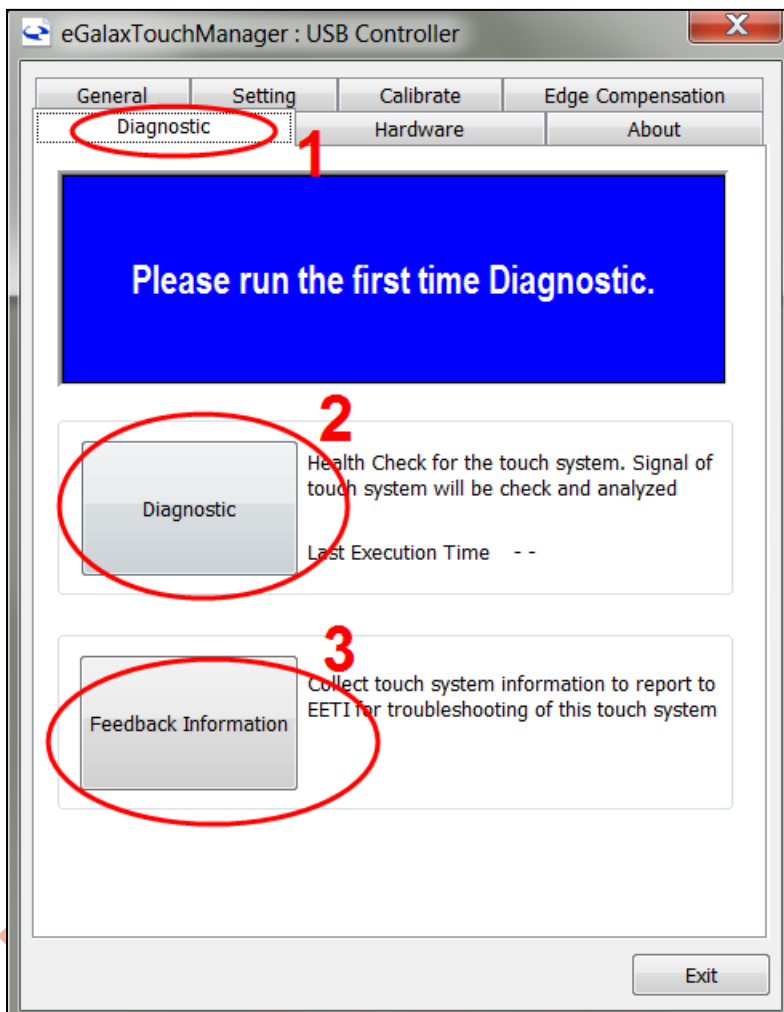
2.2 Others

If the problem is not on this guide, please follow below steps to contact EETI for further support.

2.3-1 Describe the problem as detail as possible.

2.3-2 Take pictures / video.

2.3-3 Diagnostic & Feedback Information.





eGalax_eMPIA Technology Inc.

Headquarters

11F, No 302, Rueiguang Road, Nei Hu District,

Taipei 114, TAIWAN

T: +886 2 8751 5191

F: +886 2 2797 8808



eGalaxTouch

Product ContactWeb Site: www.eeti.comSales: touch_sales@eeti.comFAE: touch_fae@eeti.com

EETI (eGalax_eMPIA Technology Inc.) reserves the right to modify revise or amended this document and/or the content, material, or specification of product at any time without prior notice. EETI takes no responsibility for, and will not be liable for, this document or related information about the suitability or availability being use to the non-EETI's product and using the EETI's product will involve the EETI's software license which including but not limited to source code, program or firmware and is authorized for EETI's product only.

Disclaimer:

UNLESS HAVE THE PRIOR NOTICE BY EETI, EETI DOES NOT RECOMMEND THE USE OF ANY OF ITS PRODUCTS IN MEDICINE, MAINTAIN IN HEALTH, EMERGENCY OR OTHER LIFE SUPPORT APPLICATIONS WHERE THE FAILURE OR MALFUNCTION OF THE PRODUCT CAN REASONABLY BE EXPECTED TO CAUSE FAILURE OF A LIFE-SUPPORT SYSTEM OR TO SIGNIFICANTLY AFFECT ITS SAFETY OR EFFECTIVENESS. EETI Products are not authorized for use in such applications as above, so anyone who violates this will bear strictly at your own risk and make representations of this.